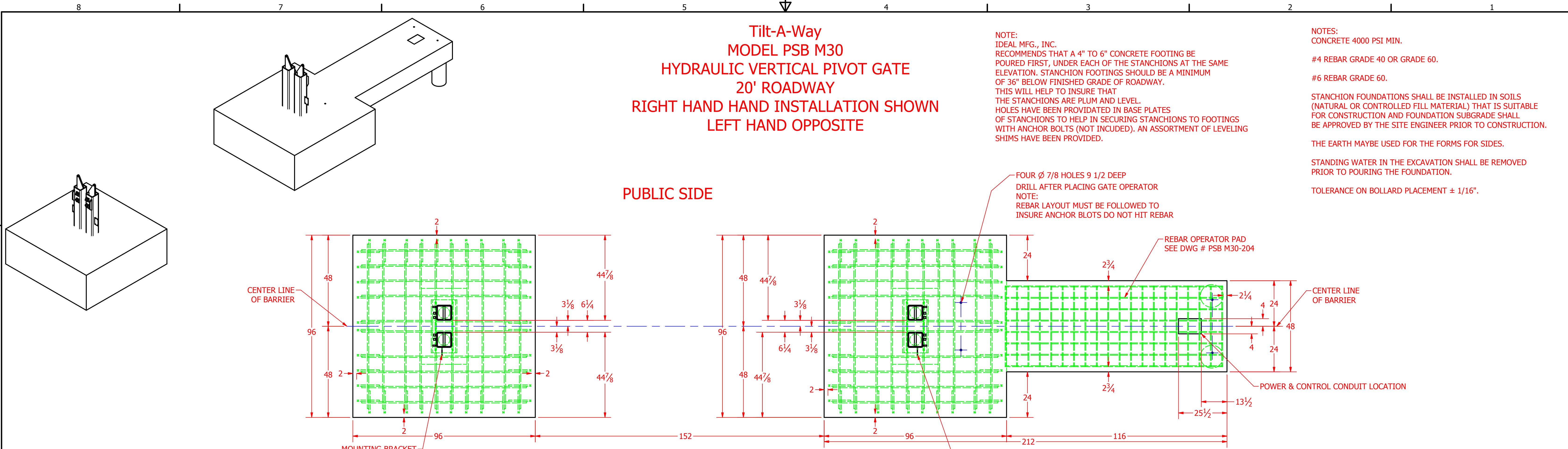


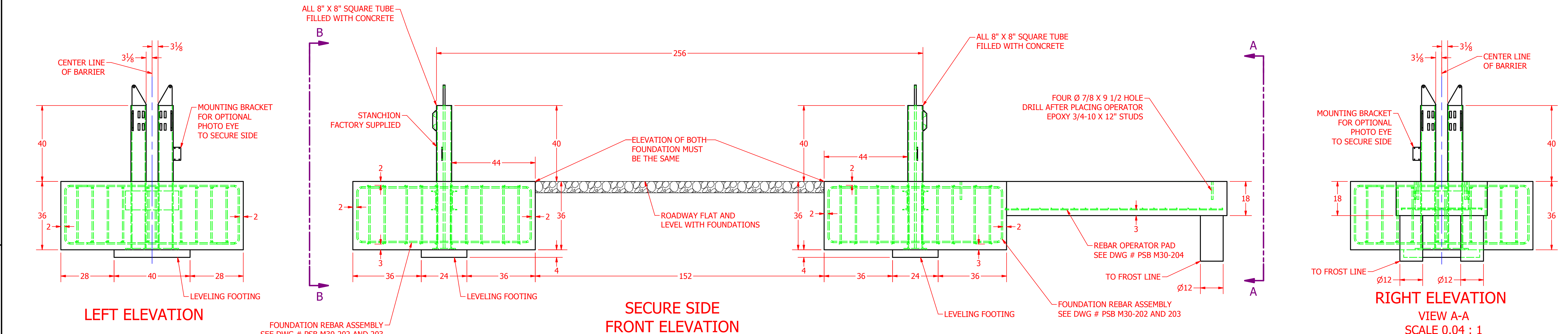
**Tilt-A-Way
MODEL PSB M30
HYDRAULIC VERTICAL PIVOT GATE
20' ROADWAY
RIGHT HAND HAND INSTALLATION SHOWN
LEFT HAND OPPOSITE**

NOTE:
IDEAL MFG., INC.
RECOMMENDS THAT A 4" TO 6" CONCRETE FOOTING BE
POURED FIRST, UNDER EACH OF THE STANCHIONS AT THE SAME
ELEVATION. STANCHION FOOTINGS SHOULD BE A MINIMUM
OF 36" BELOW FINISHED GRADE OF ROADWAY.
THIS WILL HELP TO INSURE THAT
THE STANCHIONS ARE PLUM AND LEVEL.
HOLES HAVE BEEN PROVIDED IN BASE PLATES
OF STANCHIONS TO HELP IN SECURING STANCHIONS TO FOOTINGS
WITH ANCHOR BOLTS (NOT INCLUDED). AN ASSORTMENT OF LEVELING
SHIMS HAVE BEEN PROVIDED.

NOTES:
CONCRETE 4000 PSI MIN.
#4 REBAR GRADE 40 OR GRADE 60.
#6 REBAR GRADE 60.
STANCHION FOUNDATIONS SHALL BE INSTALLED IN SOILS
(NATURAL OR CONTROLLED FILL MATERIAL) THAT IS SUITABLE
FOR CONSTRUCTION AND FOUNDATION SUBGRADE SHALL
BE APPROVED BY THE SITE ENGINEER PRIOR TO CONSTRUCTION.
THE EARTH MAYBE USED FOR THE FORMS FOR SIDES.
STANDING WATER IN THE EXCAVATION SHALL BE REMOVED
PRIOR TO POURING THE FOUNDATION.
TOLERANCE ON BOLLARD PLACEMENT ± 1/16".



**SECURE SIDE
TOP ELEVATION**



LEFT ELEVATION

**VIEW B-B
SCALE 0.04 : 1**

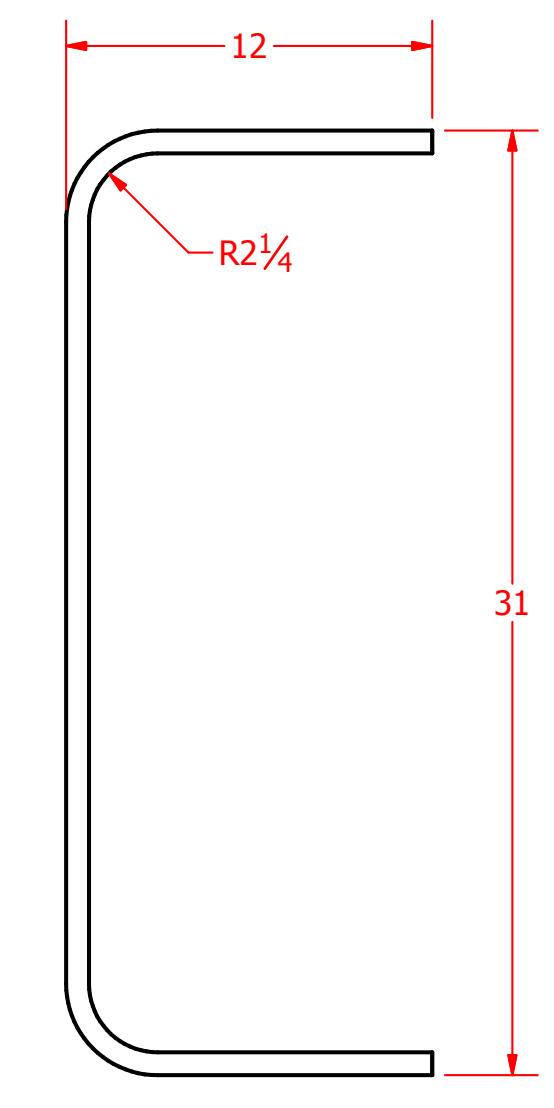
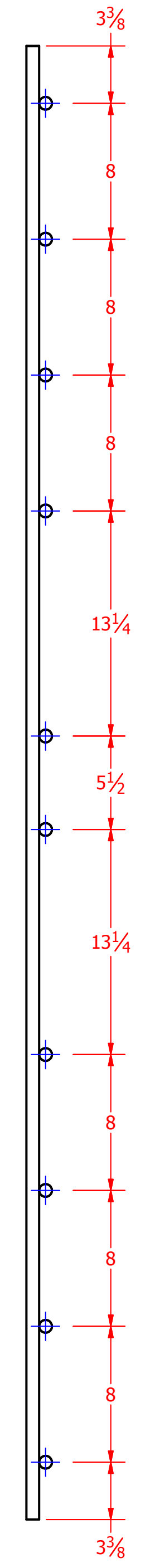
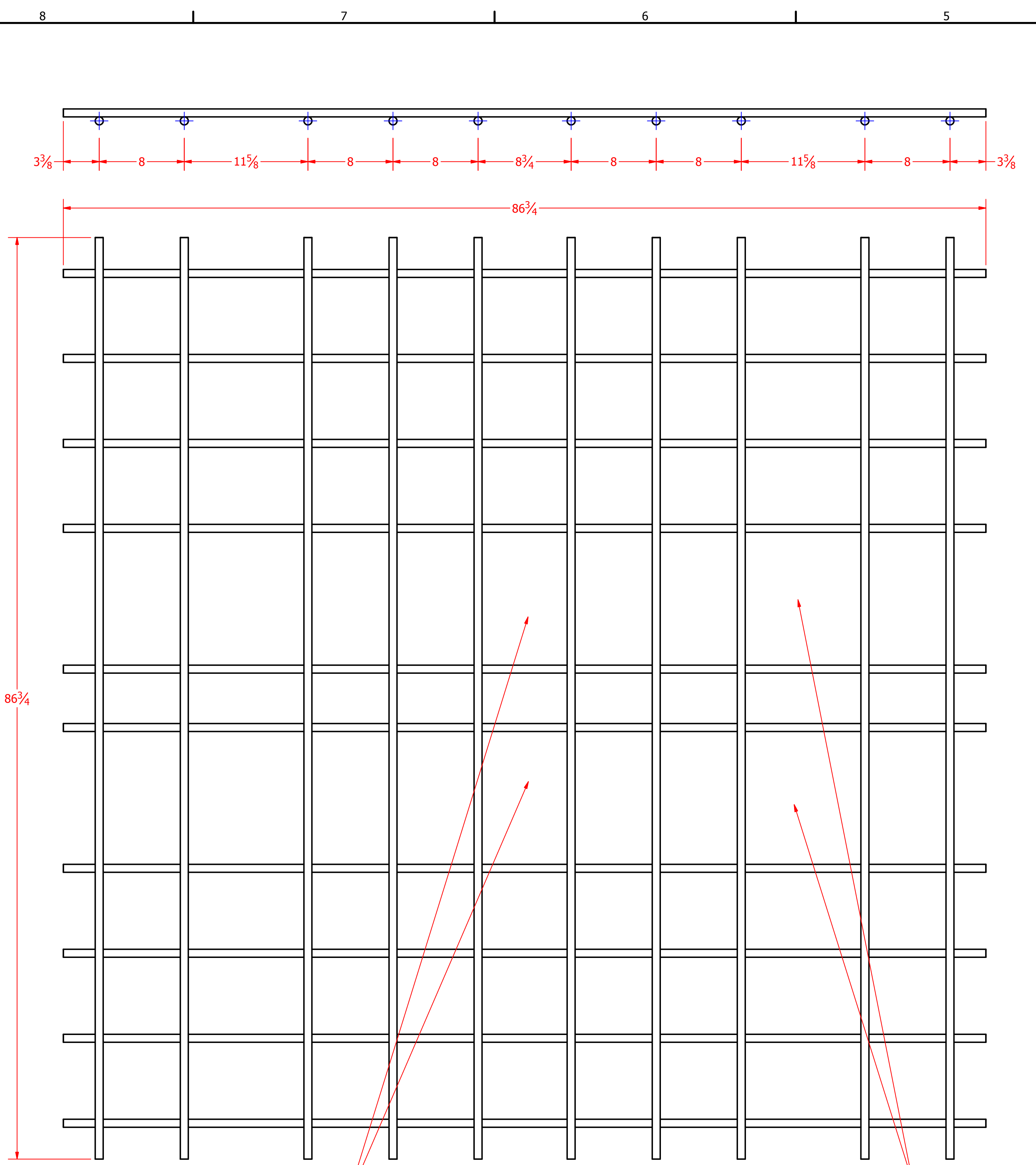
**SECURE SIDE
FRONT ELEVATION**

RIGHT ELEVATION

**VIEW A-A
SCALE 0.04 : 1**

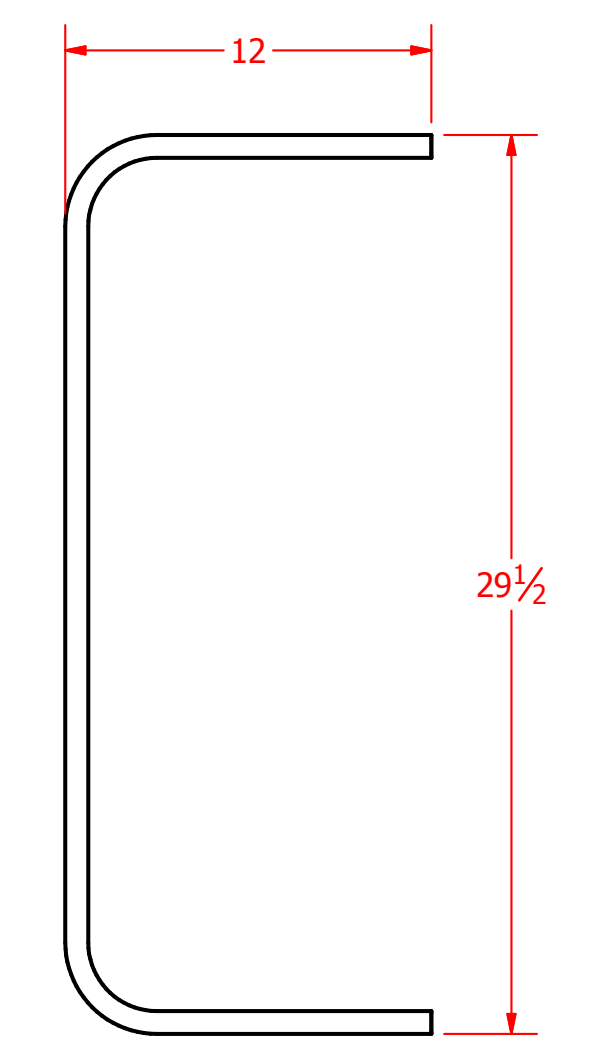
PROPRIETARY INFORMATION
IDEAL MFG., INC.
BILLINGS MONTANA
THIS INFORMATION CONSTITUTES
A TRADE SECRET OF IDEAL MFG., INC.
AND WILL NOT BE SHARED, COPIED,
OR REPRODUCED WITHOUT
WRITTEN PERMISSION FROM
IDEAL MFG., INC.

DRAWN T Henry	10/11/2018	Ideal Mfg., Inc. 2011 Harnish Blvd. Billings MT 59101 Tel. (406) 656-4360	
CHECKED	10/11/2018		
QA		TITLE TILT-A-WAY MODEL PSB M30 CONCRETE 20' ROADWAY	
MFG		SIZE D	DWG NO PSB M30- 201
APPROVED		SCALE	REV
		SHEET 1 OF 5	



**END STIRRUP
MAKE 40**

End Stirrup Parts List	
PART NUMBER	DESCRIPTION
STIRRUP END 40	REBAR #6 X 50 1/16 GRADE 60



**SIDE STIRRUP
MAKE 40**

Side Stirrup Parts List	
PART NUMBER	DESCRIPTION
STIRRUP SIDE 40	REBAR #6 X 48 9/16 GRADE 60

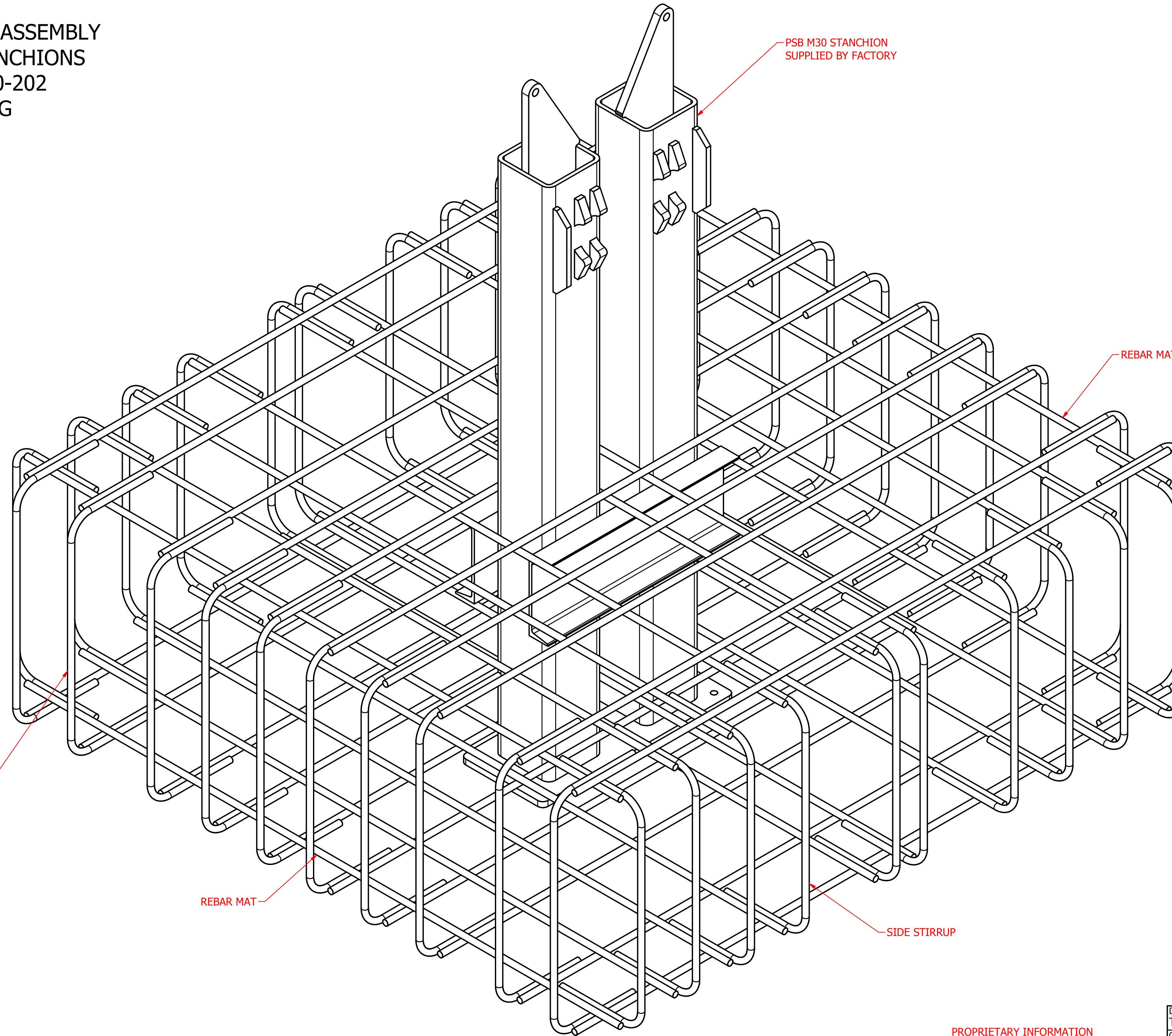
**TOP AND BOTTOM
REBAR MATS MAKE FOUR
ASSEMBLE IN PLACE
AROUND STANCHIONS
SEE DWG # PSB M30-203**

Rebar Mat Parts List	
PART NUMBER	DESCRIPTION
REBAR #6 80	REBAR # 6 X 86 3/4 GRADE 60

PROPRIETARY INFORMATION
IDEAL MFG., INC.
BILLINGS MONTANA
THIS INFORMATION CONSTITUTES
A TRADE SECRET OF IDEAL MFG., INC.
AND WILL NOT BE SHARED, COPIED,
OR REPRODUCED WITHOUT
WRITTEN PERMISSION FROM
IDEAL MFG., INC.

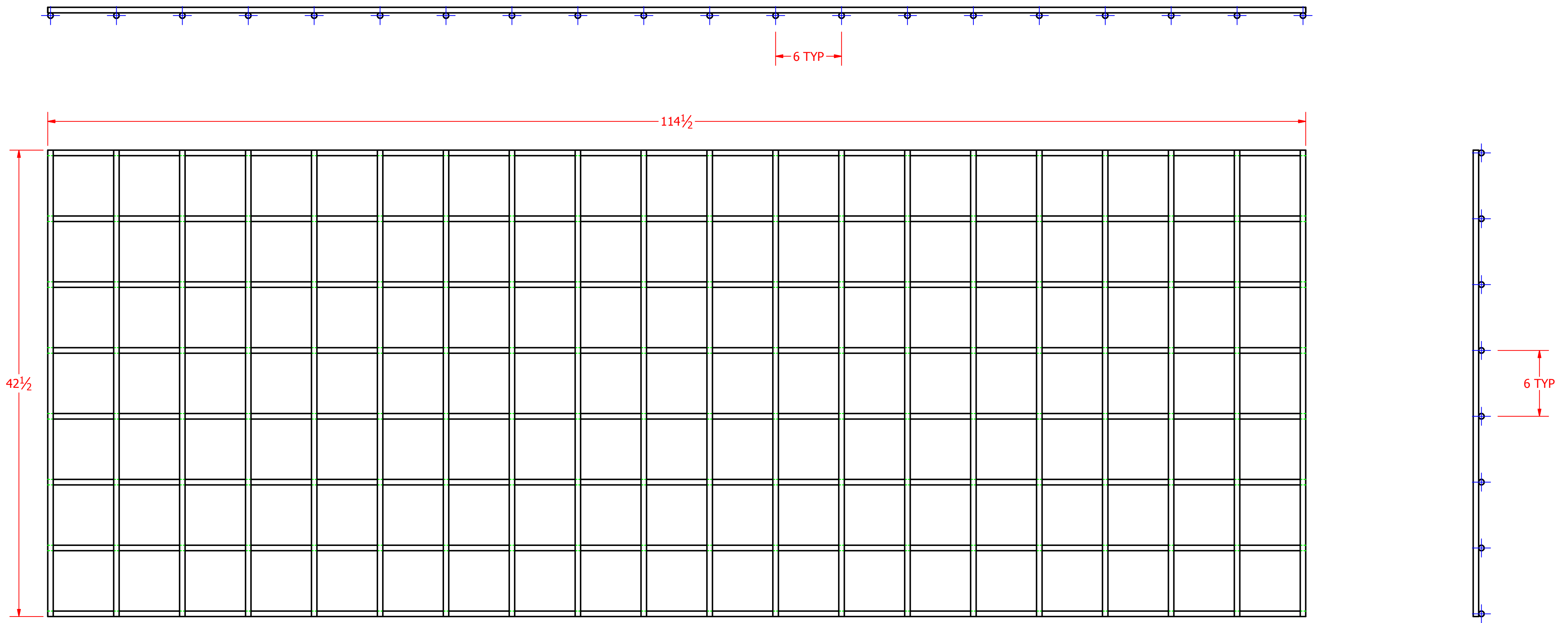
DRAWN T Henry	10/11/2018	Ideal Mfg., Inc. 2011 Harnish Blvd. Billings MT 59101 Tel. (406) 656-4360	
CHECKED	10/11/2018		
QA		TITLE	
MFG		TILT-A-WAY MODEL PSB M30 REBAR MAT AND STIRRUPS	
APPROVED		SIZE D	DWG NO PSB M30-202
		SCALE	REV
			SHEET 2 OF 5

PSB M30
 FOUNDATION REBAR ASSEMBLY
 TYP FOR BOTH STANCHIONS
 SEE DWG # M30-202
 FOR SPACING



PROPRIETARY INFORMATION
 IDEAL MFG., INC.
 BILLINGS MONTANA
 THIS INFORMATION CONSTITUTES
 A TRADE SECRET OF IDEAL MFG., INC.
 AND WILL NOT BE SHARED, COPIED,
 OR REPRODUCED WITHOUT
 WRITTEN PERMISSION FROM
 IDEAL MFG., INC.

DRAWN T Henry	10/11/2018	Ideal Mfg., Inc. 2011 Harnish Blvd. Billings MT 59101 Tel. (406) 656-4360	
CHECKED	10/11/2018		
QA		TITLE	
MFG		TILT-A-WAY MODEL PSB M30	
APPROVED		REBAR ASSEMBLY	
		SIZE D	DWG NO PSB M30-203
		SCALE	REV
		SHEET 3 OF 5	



PSB M30
REBAR OPERATOR PAD
MAKE ONE

Operator Rebar Parts List		
PART NUMBER	QTY	DESCRIPTION
# 4 GRADE 40 REBAR	20	# 4 REBAR X 42 1/2
#4 GRADE 40 REBAR	8	# 4 REBAR X 114 1/2

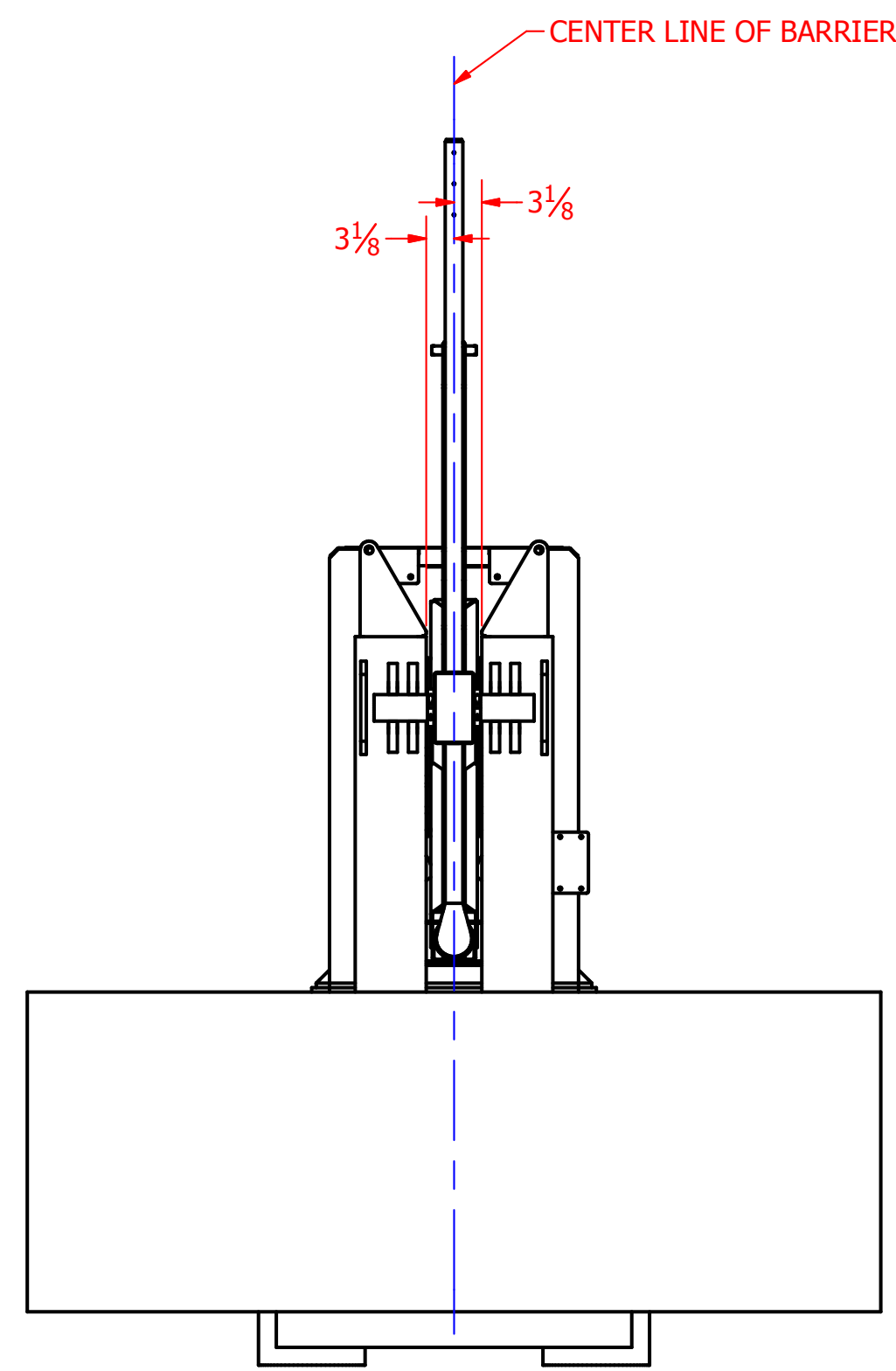
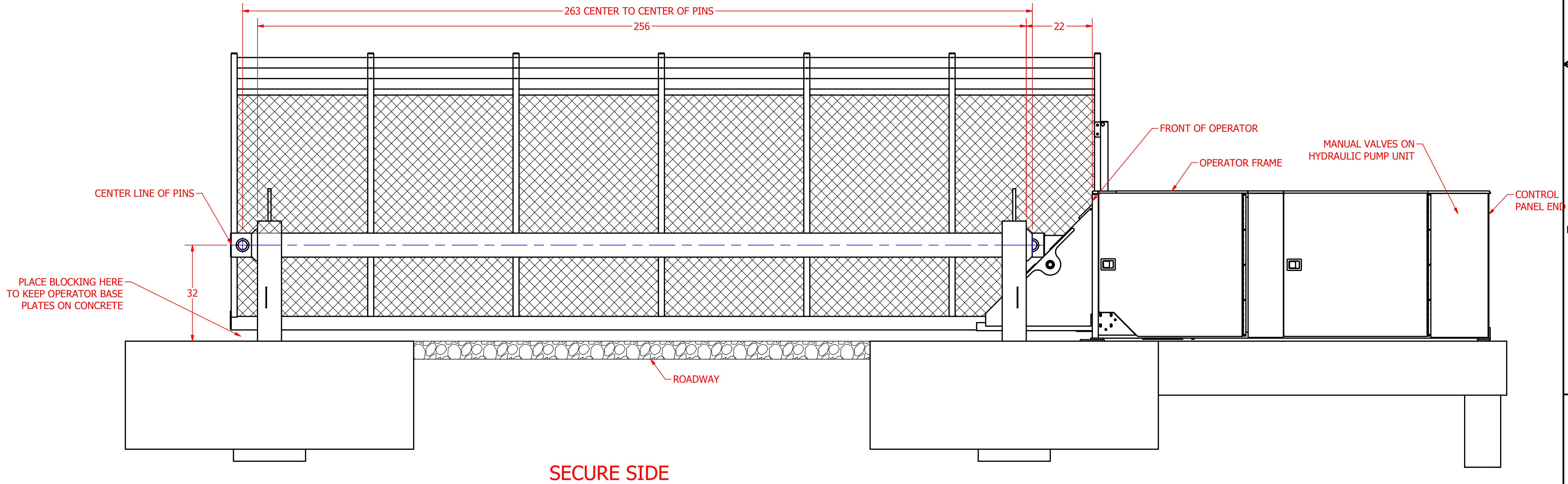
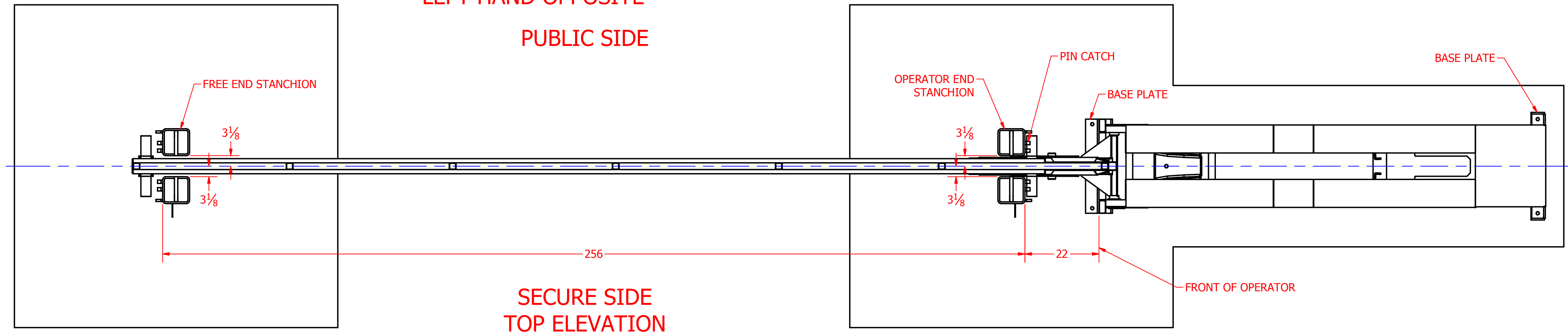
PROPRIETARY INFORMATION
IDEAL MFG., INC.
BILLINGS MONTANA
THIS INFORMATION CONSTITUTES
A TRADE SECRET OF IDEAL MFG., INC.
AND WILL NOT BE SHARED, COPIED,
OR REPRODUCED WITHOUT
WRITTEN PERMISSION FROM
IDEAL MFG., INC.

DRAWN T Henry	10/11/2018	2011 Hamish Blvd. Billings, MT 59101 Tel. (406) 656-4360		
CHECKED	10/11/2018			
QA		IDEAL Mfg., Inc. TILT-A-WAY MODEL PSB M30 REBAR OPERATOR PAD		
MFG				
APPROVED		SIZE D	DWG NO PSB M30-204	REV
SCALE		SHEET 4 OF 5		

INSTALLATION PROCEDURE.

MODEL PSB M30 CAN WEIGH UP TO 2700 POUNDS.
 USE SUITABLE LIFTING DEVICE FOR INSTALLATION.
 LIFT OPERATOR AND BARRIER OVER STANCHIONS
 LOWER OPERATOR AND BARRIER SLOWLY SO THE
 BARRIER IS IN BETWEEN BOTH STANCHIONS.
 PLACE BLOCKING UNDER FREE END OF BARRIER
 TO KEEP BOTH OPERATOR BASE PLATES ON CONCRETE.
 THE FRONT OF THE OPERATOR SHOULD BE ABOUT
 22 INCHES AWAY FROM STANCHION.
 BARRIER SHOULD BE CENTERED BETWEEN BOTH
 STANCHIONS, ADJUST AS NEEDED.
 WHEN OPERATOR AND BARRIER ARE PLACE PROPERLY
 REMOVE YELLOW LIFTING BRACKET FROM OPERATOR.
 OPEN MANUAL VALVES ON HYDRAULIC PUMP UNIT.
 HOLD CONTROL PANEL END OF OPERATOR DOWN SO
 IT WILL NOT RAISE OFF CONCRETE PAD.
 FROM FREE END OF BARRIER RAISE THE BARRIER BY
 HAND TO CHECK THAT BOTH PINS CLEAR STANCHION CATCHES.
 IF THERE IS ANY INTERFERENCE CORRECT AS NEEDED.
 WHEN PROPERLY ALIGNED LOWER BARRIER BACK ON BLOCKING.
 DRILL HOLES IN CONCRETE THROUGH HOLES IN BASE
 PLATES FOR ANCHOR BOLTS.
 FOLLOW EPOXY MANUFACTOR INSTRUCTIONS FOR ANCHOR BOLTS
 DO NOT OPERATE GATE UNTIL EPOXY HAS FULLY CURRIED.

**Tilt-A-Way
 MODEL PSB M30
 ALUMINUM BARRIER
 20' ROADWAY
 HYDRAULIC VERTICAL PIVOT GATE
 RIGHT HAND INSTALLATION SHOWN
 LEFT HAND OPPOSITE**



LEFT ELEVATION

SECURE SIDE

PROPRIETARY INFORMATION
 IDEAL MFG., INC.
 BILLINGS MONTANA
 THIS INFORMATION CONSTITUTES
 A TRADE SECRET OF IDEAL MFG., INC.
 AND WILL NOT BE SHARED, COPYED,
 OR REPRODUCED WITHOUT
 WRITEN PERMISSION FROM
 IDEAL MFG., INC.

DRAWN T Henry	10/11/2018	Ideal Mfg., Inc. 2011 Harnish Blvd. Billings MT 59101 Tel. (406) 656-4360	
CHECKED	10/11/2018		
QA		TITLE	
MFG		TILT-A-WAY MODEL PSB M30	
APPROVED		INSTALLATION PROCEDURE	
		SIZE D	DWG NO PSB M30- 205
		SCALE	REV
		SHEET 5 OF 5	